

nowcast has developed a form of technology which allows for the precise detection of lightning strokes. The system stems from the long-standing research work carried out by Prof. Hans-Dieter Betz at the Ludwig-Maximilians-University in Munich, Germany. Since 1988, the lightning detection system has been successfully offered all over the world under the brand name of LINET (Lightning Detection Network).

nowcast is an acknowledged leader of technology the world over. We have earned the trust of numerous government and enterprise customers through our ongoing commitment to precision and excellence.

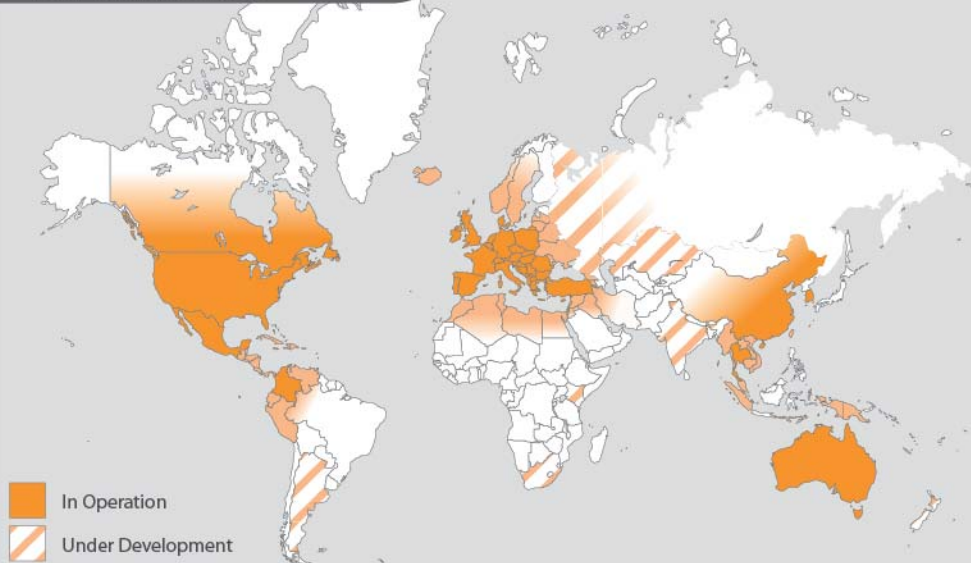


Kumwell-nowcast, a joint-venture company, was established to take care of Lightning Detection and Warning System in Thailand and ASEAN under brand "Kumwell Powered by nowcast". In particular, the location accuracy, probability of detection and detailed information provided are unique for a lightning-detection system designed to cover a large area. With our renowned expert, we can ensure the further investigation of in-depth groundwork for the LINET systems (Lightning Detection Network).



## LIGHTNING DETECTION & WARNING SYSTEM LINET SYSTEM

LINET World Map

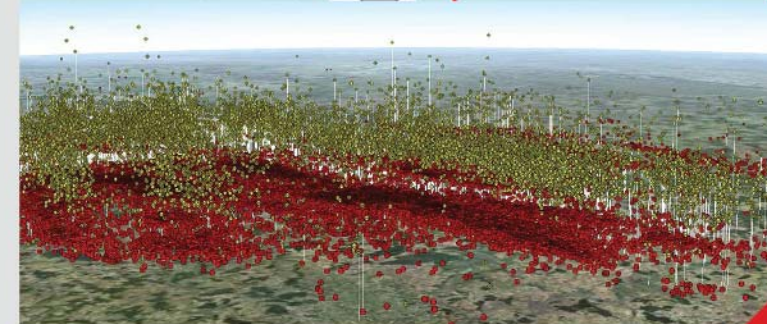
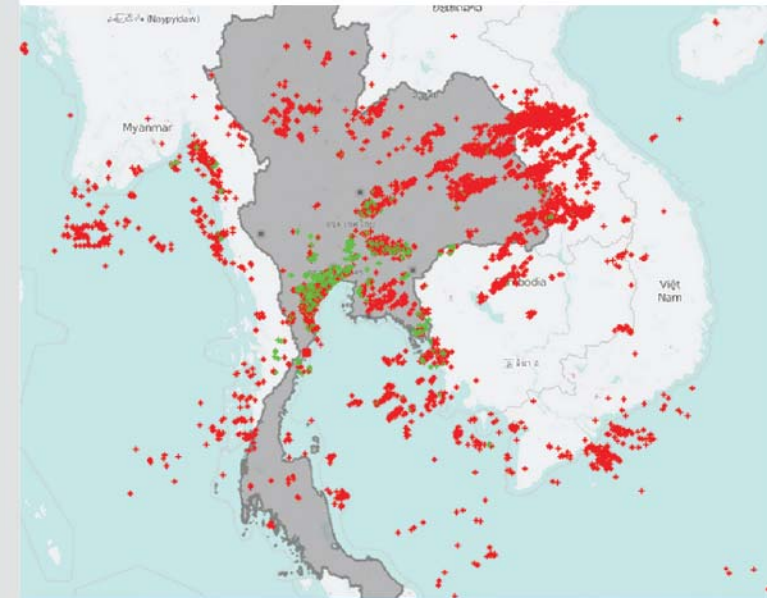


[www.kumwell.com](http://www.kumwell.com)

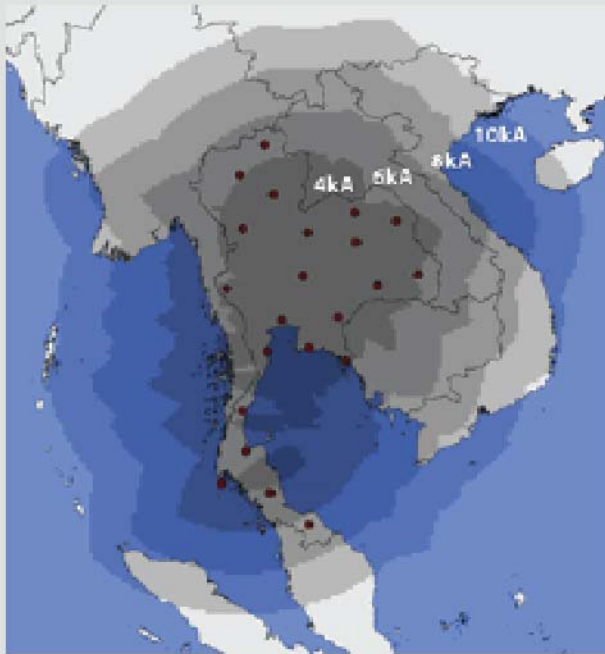


[kumwellofficial](https://www.facebook.com/kumwellofficial)

**Kumwell-nowcast.Co.,Ltd**  
100/3 Thesabansongkhov Rd.,  
Lardyao, Jatujak, Bangkok,  
Tel: (662)954-3455  
Fax: (662)591-7891  
Email: [Info@kumwell.com](mailto:Info@kumwell.com)

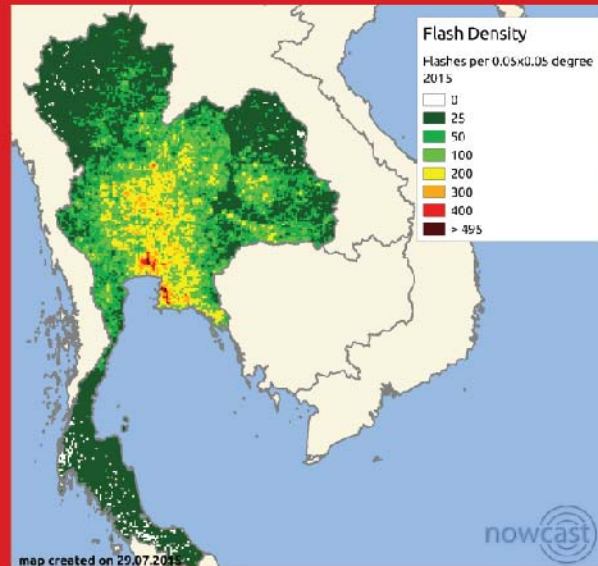
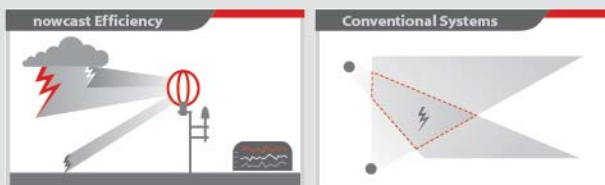


3D-Visualization of Ground-and Cloud Lightning



## The advantages of LINET System

- Numerical real-time data
- High accuracy with 100m resolution
- Assessment of location accuracy as 200% compare to other convention lightning locator networks
- Date and time ( $\mu$ s)
- Geographical co-ordinates (Latitude/Longitude)
- Lightning current sensitivity from 4kA
- Stroke type: cloud-to-ground or intra-cloud
- Emission height of intra-cloud strokes



## Lightning Density

Help you prepare your homes/buildings/plants for lightning strike in designing the proper lightning & grounding system in order to limited and/or minimized damage from lightning strike.

## Major applications for Kumwell-nowcast lightning data



### Golfers and Referees:

Warn players and spectators in advance to seek safety from thunderstorms



### Air traffic control:

Re-route aircraft hazardous thunderstorms



### Airport:

Suspend high-risk activities such as ramp operations and fueling during lightning threats



### Power-plant operations:

Prepare for storm-caused power outages by switching to back-up power before operations are impacted

